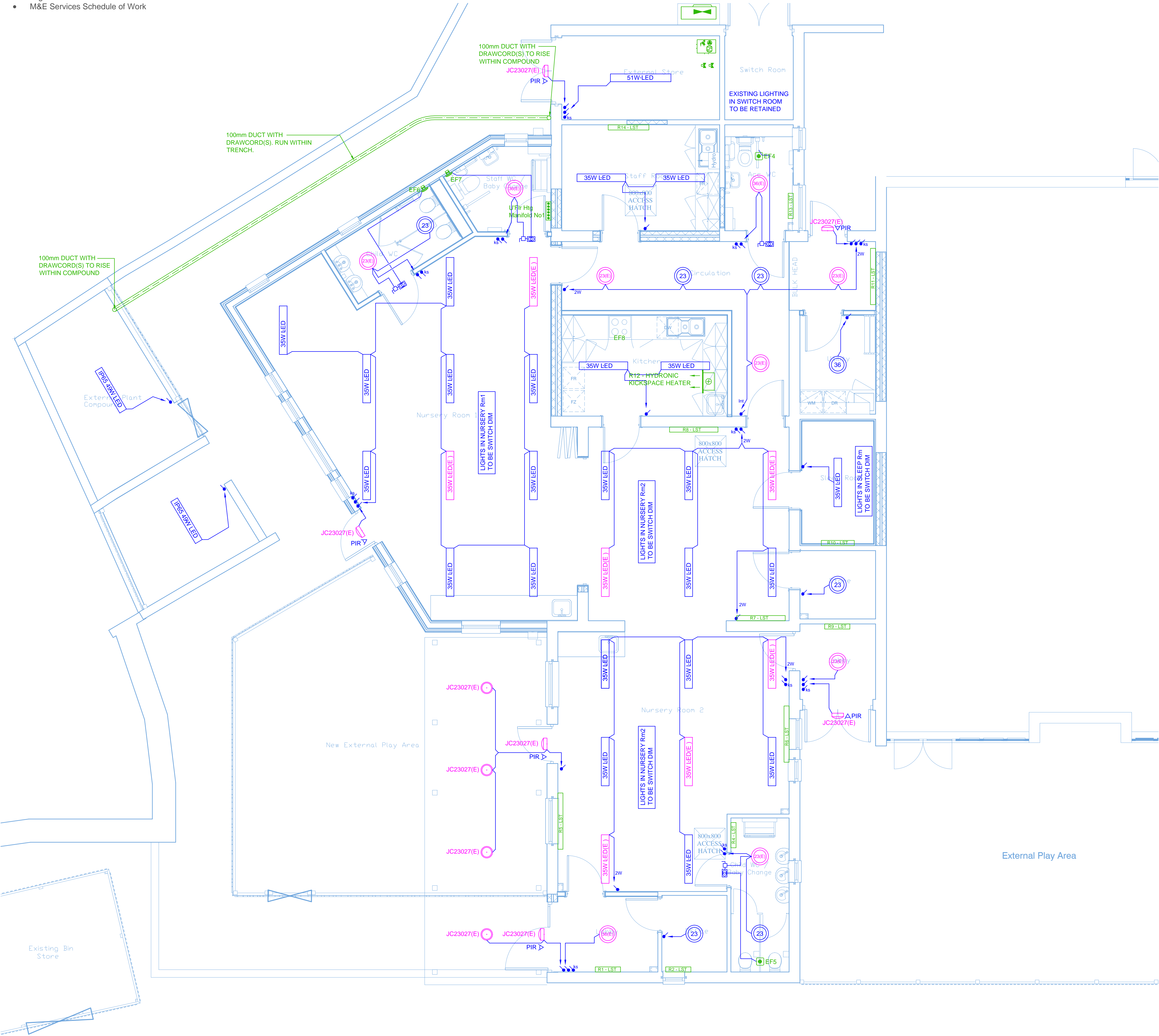


NOTE - THIS DRAWING TO BE READ IN CONJUNCTION WITH:-

- Drg Nos 170717/M/01 - 03 & 170717/E/01 - 04
- M&E Services Schedule of Work



LIGHTING LEGEND

- | | |
|--------------|--|
| 35W LED | LED (SWITCH DIM DRIVER) 35W, LUCECO LAC12P40D40 |
| 35W LED(E) | LED (SWITCH DIM + EMERGENCY DRIVER) 35W, LUCECO LAC12P40ED40 |
| 51W-LED | LED (STANDARD DRIVER) 51W, LUCECO LAC15P60S40 |
| IP65 49W LED | IP RATED LED (STANDARD DRIVER) 49W, JC71501 ToughLED 5ft single |
| 23 | SURFACE MOUNTED LED CIRCULAR, JC96311WH, Radial Vogue 23W LED 440mm dia |
| 23(E) | SURFACE MOUNTED LED CIRCULAR, JC96312WH, EMERGENCY VERSION OF ABOVE |
| 36 | SURFACE MOUNTED LED CIRCULAR, JC96313WH, Radial Vogue 36W LED 440mm dia |
| 36(E) | SURFACE MOUNTED LED CIRCULAR, JC96314WH, EMERGENCY VERSION OF ABOVE |
| JC23027(E) | WALL MOUNTED LED CIRCULAR, JC23027WOP, RadiaLED Element Mains IP65 Diameter 300mm Bulkhead 20W c/w JC23016BLK RadiaLED Element, Deep eyelid attachment |
| JC23027(E) | CEILING MOUNTED LED CIRCULAR, JC23027WOP, RadiaLED Element Mains IP65 Diameter 300mm Bulkhead 20W |
- ALL WIRING DEVICES SHALL BE AS MANUFACTURED BY Crabtree Electrical (Corinthian range) OR MK (Logic Plus range)
- Light Switch
KS Light Switch
Light Switch - Pull Cord
Ch Fan Isolator
PIR > DANLERS Compact person detector, type COPD
- POWER & DATA LEGEND**
- Single 13A Socket Outlet

REVISIONS

(A)	20/10/17	TENDER
(B)	31/10/17	ARCHITECTS COMMENTS INC.

TENDER

PROJECT :			
REFURBISHMENT OF CARN GWAVEL PRIMARY SCHOOL ISLES OF SCILLY			
CLIENT :			
COUNCIL for THE ISLES of SCILLY			
DRAWING TITLE :			
Mechanical & Electrical Services Lighting Layout			
 SJH Design Services Ltd Pentidna Barn, Prosper Hill Gwithian, Hayle, TR27 5EB Tel: 01736 757624 / Email: Stephen@sjhdesign.biz			
Date	17/07/17	Designed by	SJH
Scale	1:50 / AS SHOWN	Approved by	SJH
Drawing No. : 170717/E/03		Rev	B